



SPECIAL EDUCATION DEPARTMENT

Special Education is a Service, Not a Place.

ABOUT US

Special education services are provided when a student qualifies according to *Part 200 of the New York State Regulations*.

All students are provided interventions and supports in general education before being referred for an eligibility determination in special education. When data shows that students are not making adequate progress toward meeting grade level standards when supported by tier 1, tier 2, and tier 3 interventions in general education, a referral to special education will be made to determine eligibility for special education.

CONTINUUM OF SERVICES AND LEAST RESTRICTIVE ENVIRONMENT

Special education services are provided on a continuum from least restrictive to most restrictive.

All services on the continuum are available for consideration to meet student needs. Skaneateles Central Schools provides services and supports to allow all students to access grade level standards and content delivered in regular education along side their grade level peers.

Services and supports are provided in regular education so that the student can make meaningful progress toward IEP goals with supplementary aides and services. Removal from the regular education environment occurs only when the nature or severity of the disability of the child is such that education in regular classes with the use of supplementary aids and services cannot be achieved successfully.

- Continuum of Services
- General Education
- General Education with Related Services
- Consultant Teacher Services
- Resource Room
- Integrated Co-Teaching (Grades 1-5 ELA)
- Special Class (District and BOCES)

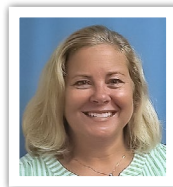


Please scan QR code or click link to access the Special Education Information and Guide.

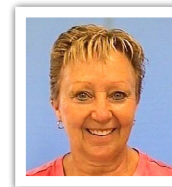
[Skaneateles CSD Special Education Information and Guide](#)

PROVIDERS/STAFF/TEAMS

Service providers in special education include special education teachers, general education teachers, reading teachers, speech pathologists, occupational therapists, physical therapists. We contract with local BOCES for hearing and vision services.



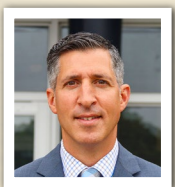
Jennifer Whipple,
Director
jwhipple@skanschools.org



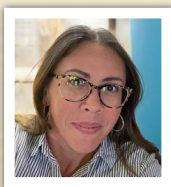
Shelly Hutson,
CSE/CPSE Secretary
mhutson@skanschools.org

*More Providers/Staff/
Teams Continued on
Next Page

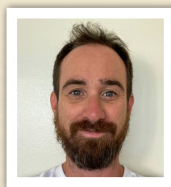
High School Team:



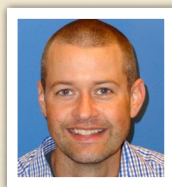
Mike Caraccio,
Principal
mcaraccio@skanschools.org



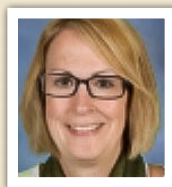
JoAnna Schmeling,
Assistant Principal
jshmeling@skanschools.org



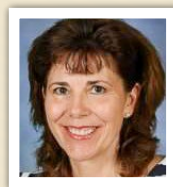
Robert Brown, Special
Education Teacher
rbrown@skanschools.org



Josh Hares, Special
Education Teacher
jhares@skanschools.org



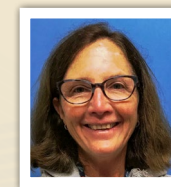
Jessica Meyer, Special
Education Teacher
jmeyer@skanschools.org



Marsha Sommers,
Teaching Assistant
msommers@skanschools.org



Ted Kush,
Teaching Assistant
tkush@skanschools.org



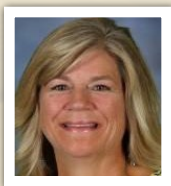
Kara Strods,
Teaching Assistant
kstrods@skanschools.org



Julie Piascik,
Teaching Assistant
jpiascik@skanschools.org



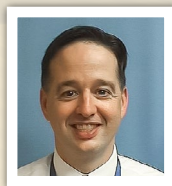
Becky Goodell,
Interventionist
bgoodell@skanschools.org



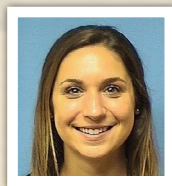
Jane O'Brien,
Interventionist
jmbrien@skanschools.org



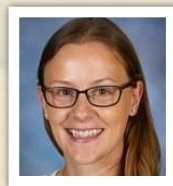
Diane Moon,
Interventionist
dmoon@skanschools.org



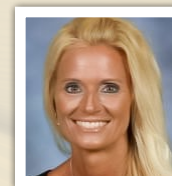
David Frechette,
School Psychologist
dfrechette@skanschools.org



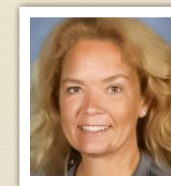
Brittany Manuel,
School Counselor
Last Names A-F
bmanuel@skanschools.org



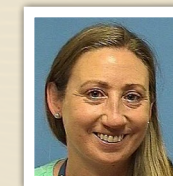
Jessica Walsh,
School Counselor
Last Names G-O
jcwalsh@skanschools.org



Mary Lou Ingram,
School Counselor
Last Names P-Z
m Ingram@skanschools.org



Elaine Croucher,
Occupational Therapist
ecroucher@skanschools.org

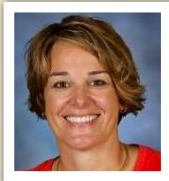


Melissa Paolino,
Physical Therapist
m paolino@skanschools.org

Middle School Team:



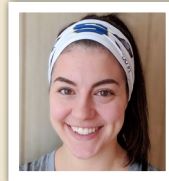
Mike Olley,
Principal
molley@skanschools.org



Michelle Beaudet,
Special Education
Teacher
mbeaudet@skanschools.org



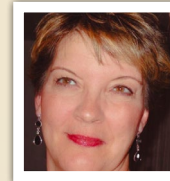
Lucy Copeland, Special
Education Teacher
lcopelan@skanschools.org



Brianna Ruggio, Special
Education Teacher and
Interventionist
bruggio@skanschools.org



Audra Schweska,
Teaching Assistant
aschweska@skanschools.org



Sue Mallory,
Teaching Assistant
smallory@skanschools.org



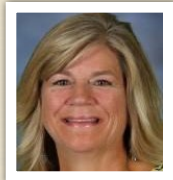
Becky Goodell,
Interventionist
bgoodell@skanschools.org



Cari Danaher,
Interventionist
cdanaher@skanschools.org



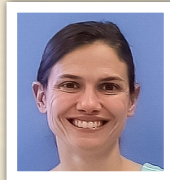
Heather Von Uderitz,
Interventionist
hvonuder@skanschools.org



Jane O'Brien,
Interventionist
jobrien@skanschools.org



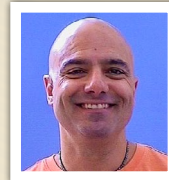
Liz Hyatt,
Interventionist
ehyatt@skanschools.org



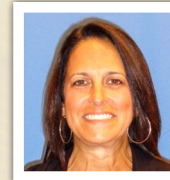
Carrie Viggiano,
Interventionist
cviggiano@skanschools.org



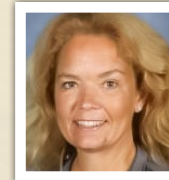
Vicky Powers, School
Psychologist
vpowers@skanschools.org



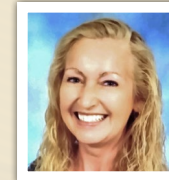
Chris Viggiano,
School Counselor
cviggian@skanschools.org



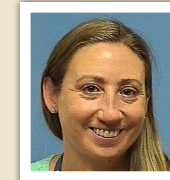
Michele Rogala,
School Social Worker
mrogala@skanschools.org



Elaine Croucher,
Occupational Therapist
ecroucher@skanschools.org



Sue O'Brien,
Occupational Therapist
sobrien@skanschools.org

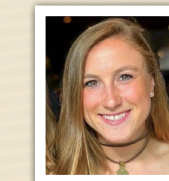


Melissa Paolino,
Physical Therapist
mpaolino@skanschools.org

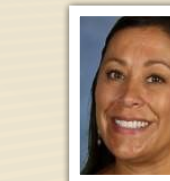
State Street School Team:



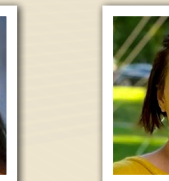
John Lawrence,
Principal
jlawrence@skanschools.org



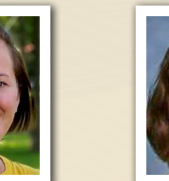
Kelsey Youmell, Special
Education Teacher and
Interventionist (New)
kyoumell@skanschools.org



JoAnn Trice, Special
Education Teacher and
Interventionist
jatrice@skanschools.org



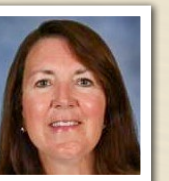
Erin Young, Special
Education Teacher and
Interventionist
eyoung@skanschools.org



Keri O'Connor, Special
Education Teacher and
Interventionist
koconnor@skanschools.org



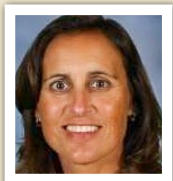
Stephanie Donzella,
Interventionist
sdonzella@skanschools.org



Connie Bohrer,
Interventionist
cbohrer@skanschools.org



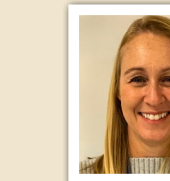
Betsy Smith,
Interventionist
esmith@skanschools.org



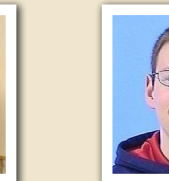
Ann Montreal,
Interventionist
amontrea@skanschools.org



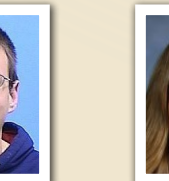
Lisa McGlynn,
Teaching Assistant
lmcglynn@skanschools.org



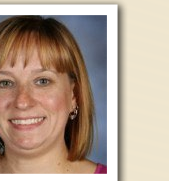
Yaël Miller,
Teaching Assistant
ymiller@skanschools.org



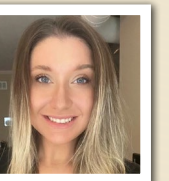
Thomas Andrews,
Teaching Assistant
tandrews@skanschools.org



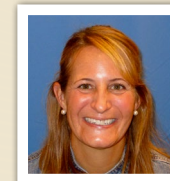
Kathy Magruder,
Teaching Assistant
kmagrude@skanschools.org



Echo Lynch,
Speech Pathologist
elynch@skanschools.org



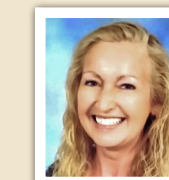
Alyssa Kirley,
Psychologist
akirley@skanschools.org



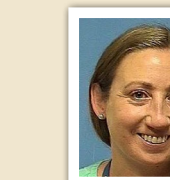
Abbie Kissel-Paine,
School Counselor
apaine@skanschools.org



Elaine Croucher,
Occupational Therapist
ecroucher@skanschools.org

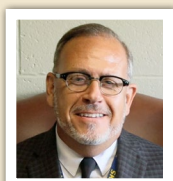


Sue O'Brien,
Occupational Therapist
sobrien@skanschools.org

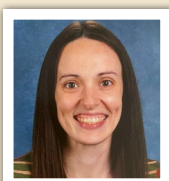


Melissa Paolino,
Physical Therapist
mpaolino@skanschools.org

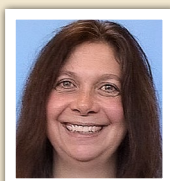
Waterman School Team:



Pat Brown,
Principal
pbrown@skanschools.org



Kelly Cargile, Special
Education Teacher and
Interventionist (New)
kcargile@skanschools.org



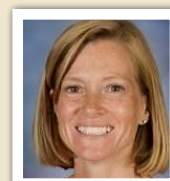
Jennifer Capozzi, Special
Education Teacher and
Interventionist
jcapozzi@skanschools.org



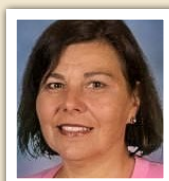
Cari Danaher,
Interventionist
cdanaher@skanschools.org



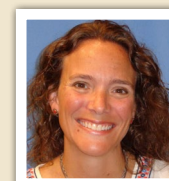
Heather Von Uderitz,
Interventionist
hvonuder@skanschools.org



Pam Anastasio,
Interventionist
panastas@skanschools.org



Mary Palladino-Baldwin,
Interventionist
mbaldwin@skanschools.org



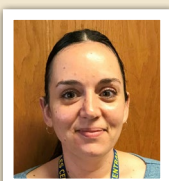
Alanna Schoonmaker,
Speech Pathologist
aschoonmaker@skanschools.org



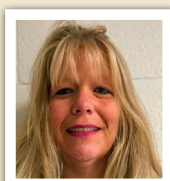
Cheryl Tompkins,
Speech Pathologist
ctompkin@skanschools.org



Emma Solomon,
Speech Pathologist
(New Position)
esolomon@skanschools.org



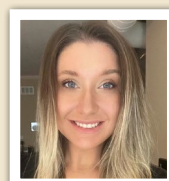
Sarah Sliwka,
Teaching Assistant
ssliwka@skanschools.org



Karen Drew,
Teaching Assistant
kdrew@skanschools.org



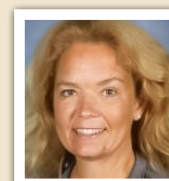
Sue Grady,
Teaching Assistant
sgrady@skanschools.org



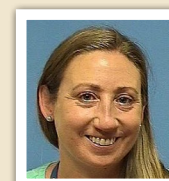
Alyssa Kirley,
School Psychologist
(Until New Position
is Filled)
akirley@skanschools.org



Marcy Weed,
School Social Worker
mweed@skanschools.org



Elaine Croucher,
Occupational Therapist
ecroucher@skanschools.org



Melissa Paolino,
Physical Therapist
mpaolino@skanschools.org

RELATIONSHIPS | CONNECTIONS | LEARNING



#GOLAKERS #LAKERPRIDE

@Skaneateles.Schools

@skanschools

@SkanLakers



Skaneateles Central School District
45 East Elizabeth Street
Skaneateles, NY 13152



www.skanschools.org

Created by CiTi Public Relations



www.citiboces.org/publicrelations